

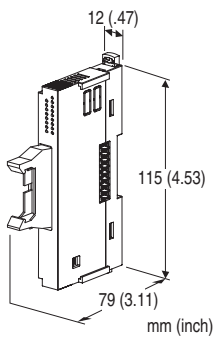
## Remote I/O R8 Series

### NPN TRANSISTOR OUTPUT MODULE, 16 points

(with shortcircuit protection)

#### Functions & Features

- 16 channels for discrete output, compact size remote I/O module
- 20 pin MIL connector



## MODEL: R8-DCM16A

### ORDERING INFORMATION

- Code number: R8-DCM16A

### RELATED PRODUCTS

- PC configurator software (model: R8CFG)  
Downloadable at M-System's web site.  
A dedicated cable is required to connect the module to the PC. Please refer to the internet software download site or the users manual for the PC configurator for applicable cable types.

### GENERAL SPECIFICATIONS

#### Connection

- **Output:** 20-pin MIL connector  
PWB connector (M-System)  
Recommended socket XG5N-201 (Omron)  
Recommended contact XG5W-0231 (Omron)  
Applicable wire size AWG22, number of conductor 17, diameter of conductor 0.16 mm (The socket and contact are not included in the package. Refer to the specifications of the product.)
- **Excitation supply, internal bus:**  
Connected to internal bus connector
- **Internal power:** Supplied from internal bus connector
- Isolation:** Output or exc. supply to internal bus or internal power
- Module address:** With rotary switch
- Terminating resistor:** Built-in (DIP Switch, default: disable)

**Status indicator:** Bi-color (red/green) LED; Refer to the instruction manual.

**Discrete output status indicators:** Green LED; Refer to the instruction manual.

### OUTPUT SPECIFICATIONS

**Common:** Negative common (NPN) per 16 points

**Maximum outputs applicable at once:** No limit (at 24 V DC)

**Number of output:** 16 points

**Rated load voltage:** 24 V DC  $\pm 10\%$

**Rated output current:** 0.1 A per point, 1.6 A per common

**Residual voltage:**  $\leq 0.5$  V

**Leakage current:**  $\leq 0.1$  mA

**ON delay:**  $\leq 0.5$  msec.

**OFF delay:**  $\leq 1.5$  msec.

With shortcircuit protection

With overheat protection

### INSTALLATION

**Max. current consumption:** 110 mA

**Operating temperature:**  $-10$  to  $+55^{\circ}\text{C}$  ( $14$  to  $131^{\circ}\text{F}$ )

**Operating humidity:** 30 to 90 %RH (non-condensing)

**Atmosphere:** No corrosive gas or heavy dust

**Mounting:** DIN rail

**Weight:** 65 g (2.3 oz)

### PERFORMANCE

**Data allocation:** 1

**Module addresses in use:** 1

**Power output (output connector): Power output (input terminal):** Rated current DC 3 A (rated current 3 A for internal fuse (slow blow fuse  $i^2t$  ( $\text{A}^2\text{sec}$ ) max. 5.04)

**Insulation resistance:**  $\geq 100$  M $\Omega$  with 500 V DC

**Dielectric strength:** 1500V AC @1 minute

(output or exc. supply to internal bus or internal power to ground)

### STANDARDS & APPROVALS

**CE conformity:**

EMC Directive (2004/108/EC)

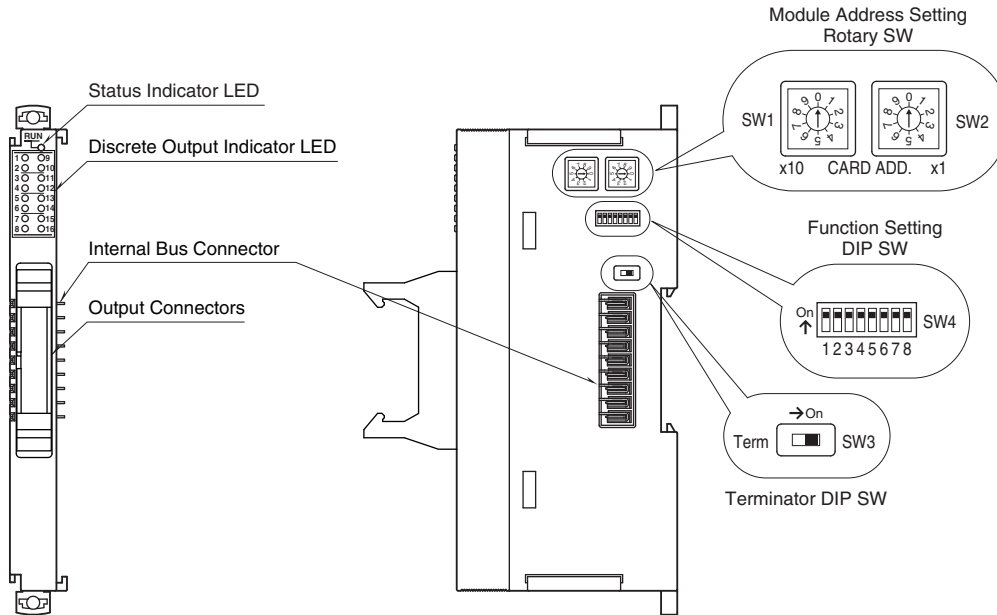
EMI EN 61000-6-4: 2007

EMS EN 61000-6-2: 2005

## EXTERNAL VIEW

### ■ FRONT VIEW

### ■ SIDE VIEW



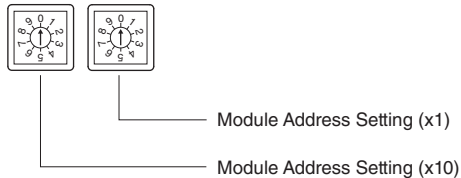
## OPERATING MODE

(\*) Factory setting

### ■ MODULE ADDRESS

The left switch determines the tenth place digit, while the right switch does the ones place digit of the address. Address is selected between 0 to 31.

(Factory setting: 0)



### ■ OUTPUT AT THE LOSS OF COMMUNICATION

OUTPUT AT THE LOSS OF COMMUNICATION	SW4-5
Output Hold (*) (last data correctly received is hold)	OFF
Stop output (Output fixed at OFF)	ON

Note: Be sure to set unused SW4-1 through 4, SW4-6, SW4-7

### ■ CONFIGURATION MODE

CONFIGURATION MODE	SW4-8
DIP switch setting (*)	OFF
PC Configurator and communication	ON

### ■ TERMINATOR DIP SW

TERMINATOR SW	SW3
Without (*)	OFF
With	ON

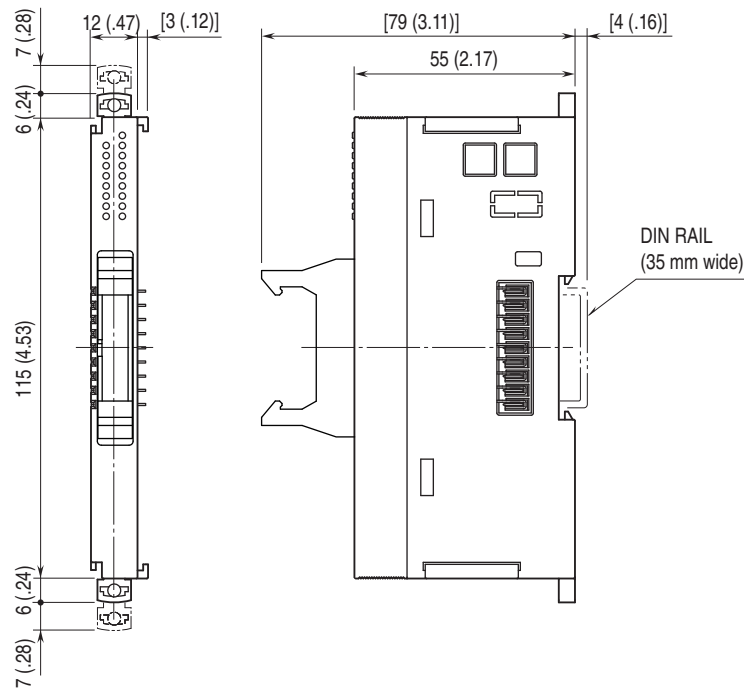


**幸託有限公司**  
XIN TOP CORPORATION

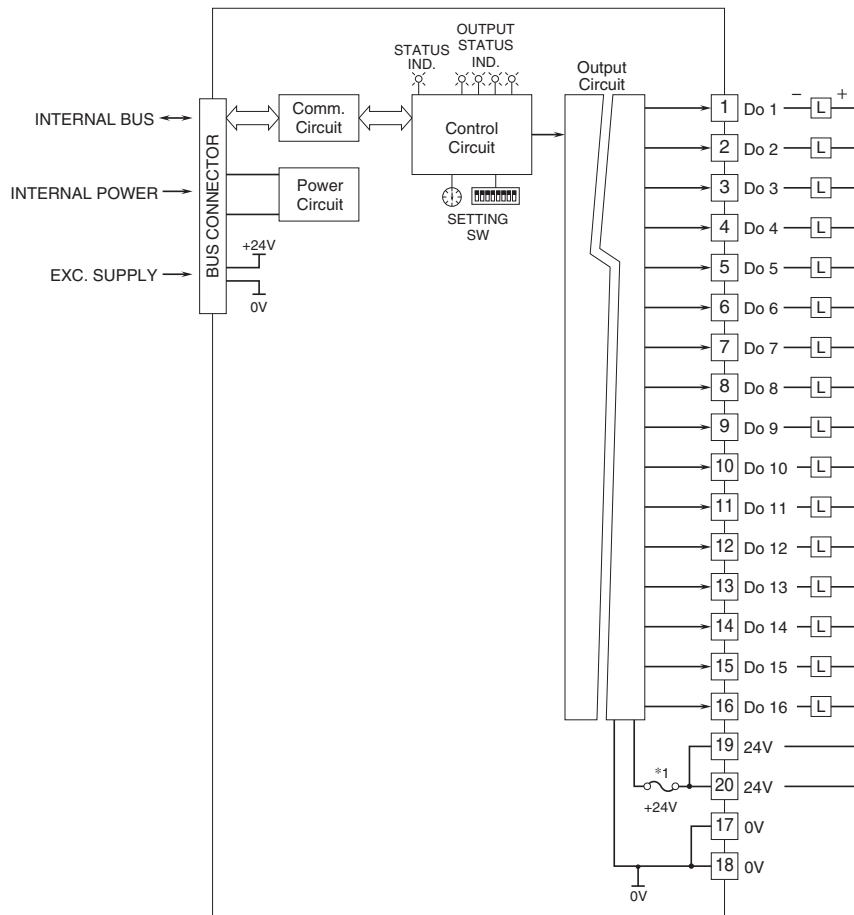
TEL : (02)2598-1199  
FAX : (02)2596-2331

E-mail : info@xintop.com  
Website : www.xintop.com

## DIMENSIONS unit: mm (inch)

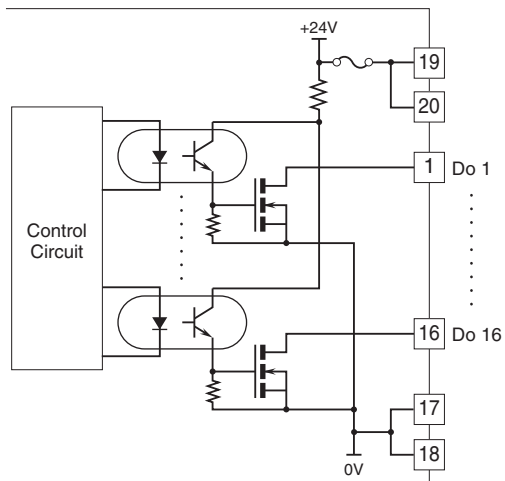


## SCHEMATIC CIRCUITRY & CONNECTION DIAGRAM



\*1. Fuse is not replazable.

## ■ OUTPUT CIRCUIT



Specifications are subject to change without notice.